

Type K1a

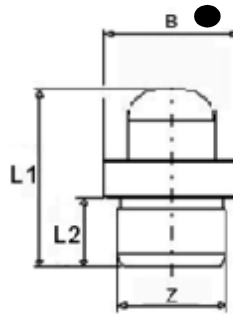
Ball-Type Grease Nipples - Drive-in Version



- according to former DIN 3402
- straight version A/180°
- drive-in-type with plain shank
- standard versions according to DIN are made of steel, zinc-plated and passivated
- for other types and materials, please see table, or upon request

Z shank Ø
L1 overall length
L2 shank length
B collar Ø

(all measures in mm)



Z	6 mm Ø			Ref.- No.:			
L1	L2	B		Steel	Brass	SST303	SST316L
14	5,5	8	●	2100186	2110186	2120186	
15	6,5	8	●		2110187		

Z	8 mm Ø			Ref.- No.:			
L1	L2	B		Steel	Brass	SST303	SST316L
14	5,5	10	●	2100288	2110288	2120288	

Z	10 mm Ø			Ref.- No.:			
L1	L2	B		Steel	Brass	SST303	SST316L
14	5,5	12	●	2100389			

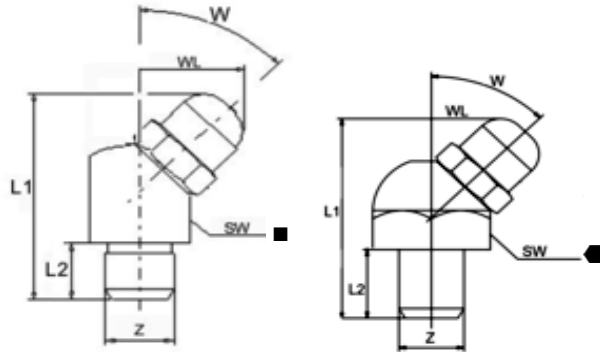
Type K2a Ball-Type Grease Nipples - Drive-in Version



- according to former DIN 3402
- angled version B/45°
- drive-in-type with plain shank
- made of steel, zinc-plated and passivated
- standard versions according to DIN are made of steel, zinc-plated and passivated

Z shank \varnothing
 L1 overall length
 L2 shank length
 WL angle length
 W angle
 SW HEX size

(all measures in mm)



Z 6 mm \varnothing					Ref.- No.:				
L1	L2	WL	W	SW	Steel	Brass	SST303	SST316L	
19	5,5	9	45°	9mm SQ. ■	2204586				
21	7	9	45°	9mm HEX ●		2111467			

Z 8 mm \varnothing					Ref.- No.:				
L1	L2	WL	W	SW	Steel	Brass	SST303	SST316L	
19	5,5	9	45°	9mm SQ. ■	2204588				
21	7	9	45°	9mm HEX ●		2111466			

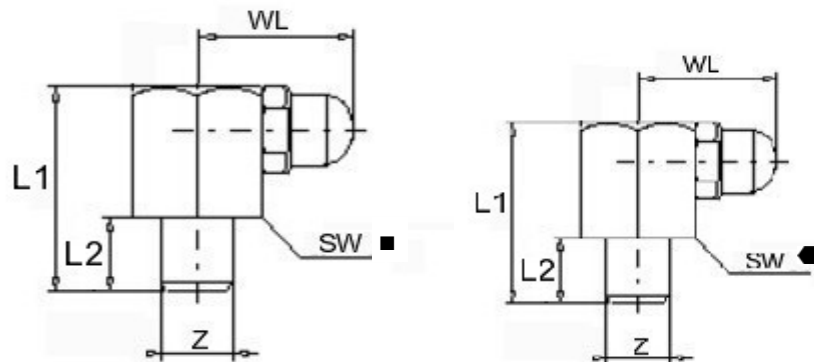
Z 10 mm \varnothing					Ref.- No.:				
L1	L2	WL	W	SW	Steel	Brass	SST303	SST316L	
19	5,5	9,5	45°	11mm SQ. ■	2204789				

Type K3a Ball-Type Grease Nipples - Drive-in Version



- according to former DIN 3402
- angled version C/90°
- drive-in-type with plain shank
- standard versions according to DIN are made of steel, zinc-plated and passivated

Z shank Ø
L1 overall length
L2 shank length
WL angle length
W angle
SW HEX size



(all measures in mm)

Z 6 mm Ø					Ref.- No.:				
L1	L2	WL	W	SW	Steel	Brass	SST303	SST316L	
18	5,5	13	90°	9mm SQ. ■	2304586				
18	5,5	13	90°	9mm HEX ●		2111462			
19	5,5	13	90°	11mm HEX ●		2111463			

Z 8 mm Ø					Ref.- No.:				
L1	L2	WL	W	SW	Steel	Brass	SST303	SST316L	
18	5,5	13	90°	9mm SQ. ■	2304588				
19	5,5	13	90°	11mm HEX ●		2111464			